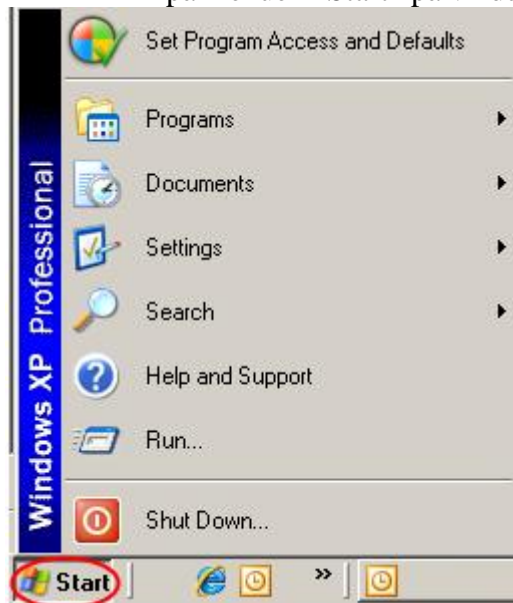
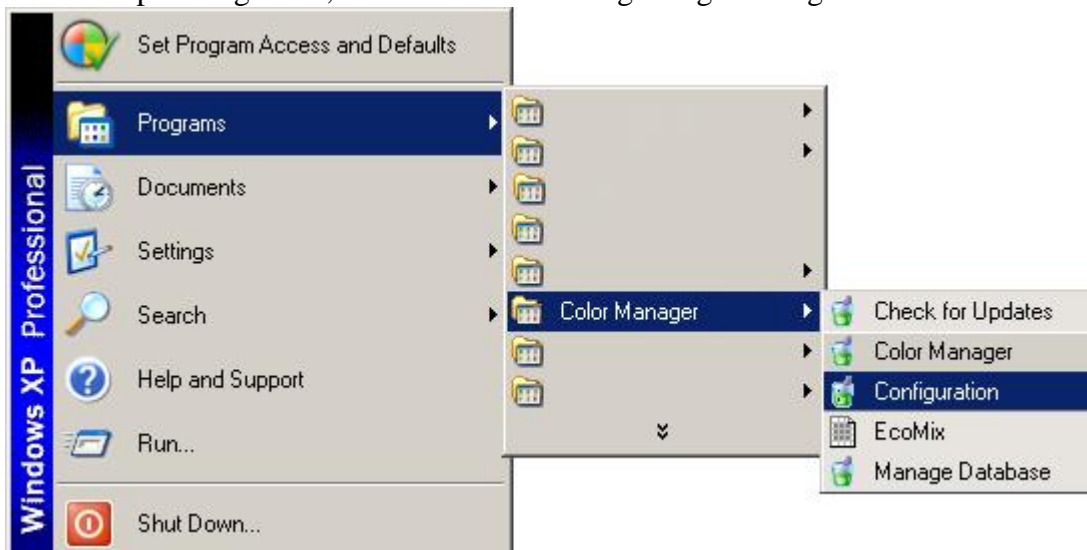


Følg disse enkle trin for at få adgang til din konto:

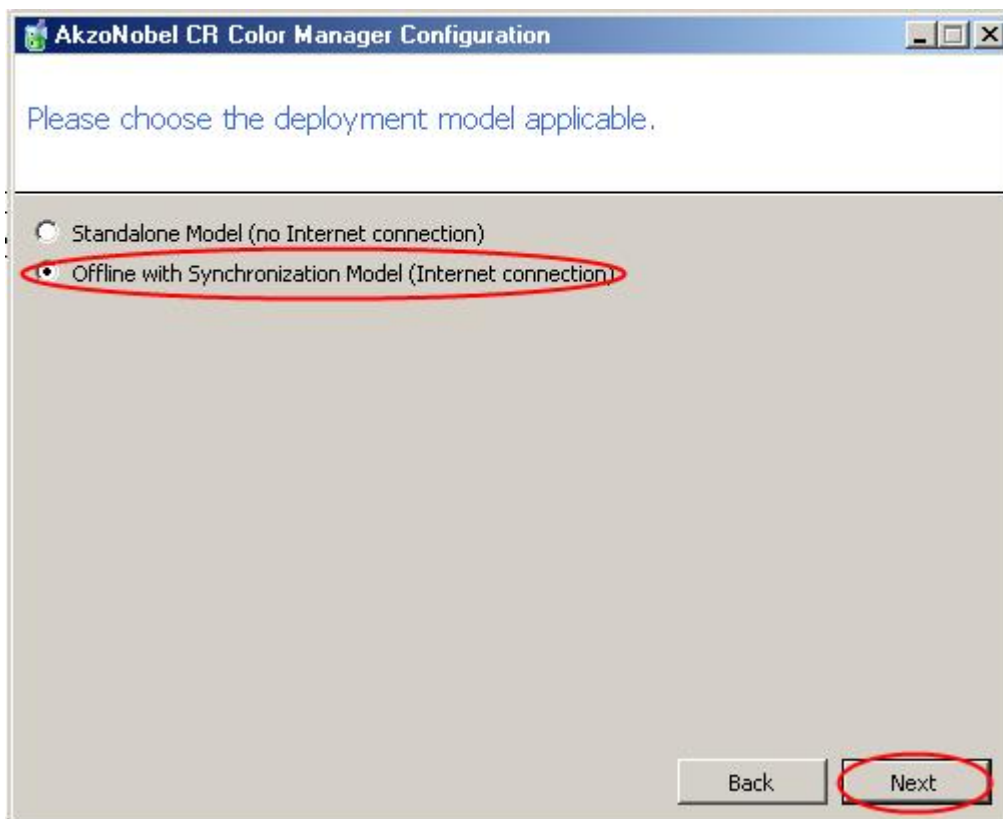
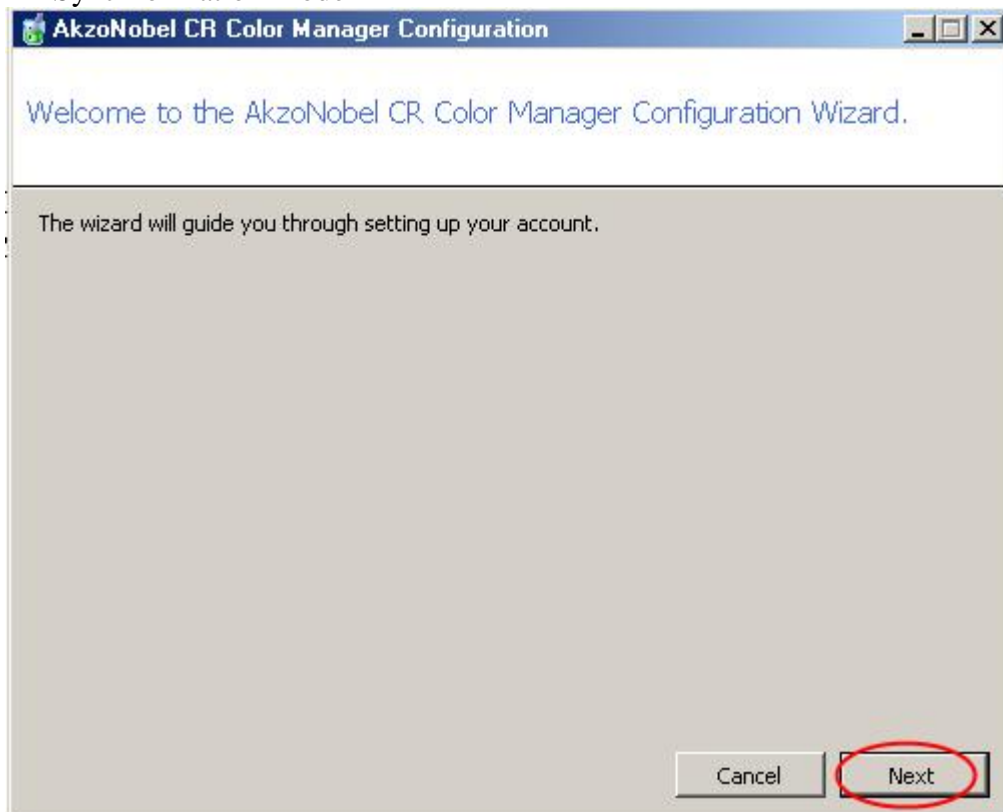
- Klik på menuen "Start" på vinduet



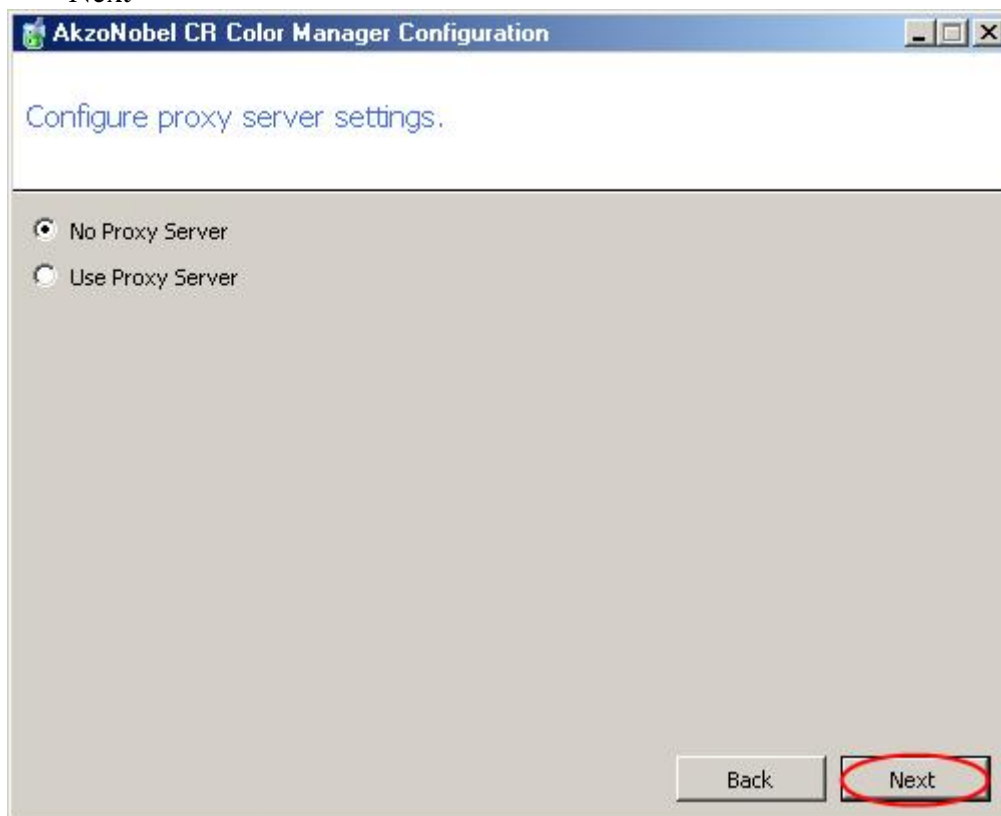
- Klik på "Programs", derefter "Color Manager" og "Configuration"



- Fortsæt i "Configuration Menu" ved at vælge "Next" og "Offline with Synchronization Model"





- Du må ikke foretage ændringer i dine proxy-indstillinger. Tryk dernæst på “Next”



- Indtast dit brugernavn og adgangskode i afsnittet “Enter Account Information”, og tryk på “Next”

AkzoNobel CR Color Manager Configuration

Enter Account Information.

Account Number	<input type="text" value="CR_CUST_*****"/>	 Please reference the 'User Name AkzoNobel Car Refinishes' delivered to you per email. If you are uncertain about the email, please contact your AkzoNobel CR representative.
Account Password	<input type="password" value="*****"/>	
Retype Account Password	<input type="password" value="*****"/>	
Account Brand Key	<input type="text" value="*****"/>	 Please reference the 'Mixit Validation Key' delivered to you per email. If you are uncertain about the email, please contact your AkzoNobel CR representative.
Account Feature Key	<input type="text" value="*****"/>	