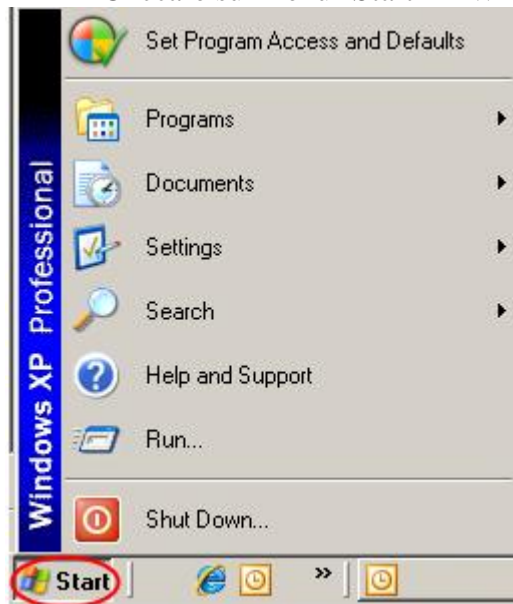
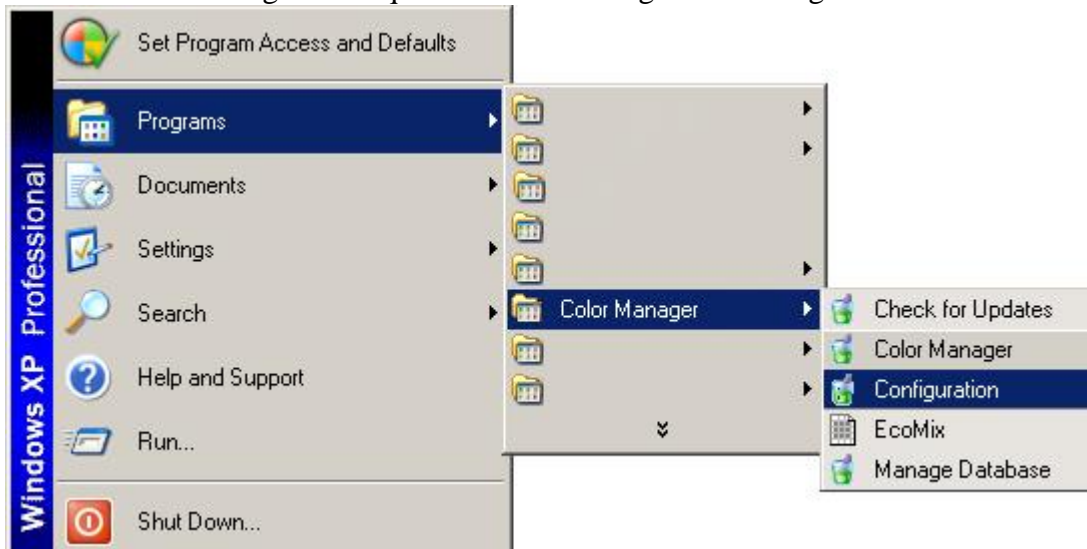


Per accedere al vostro account seguite questi semplici passaggi:

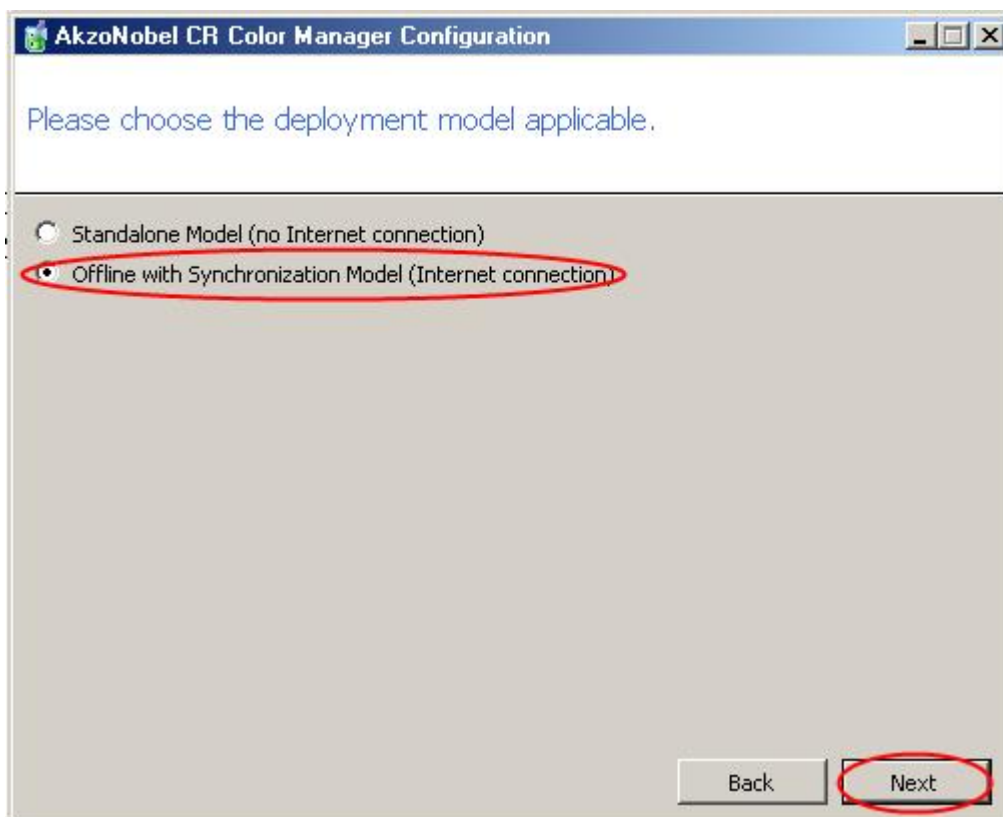
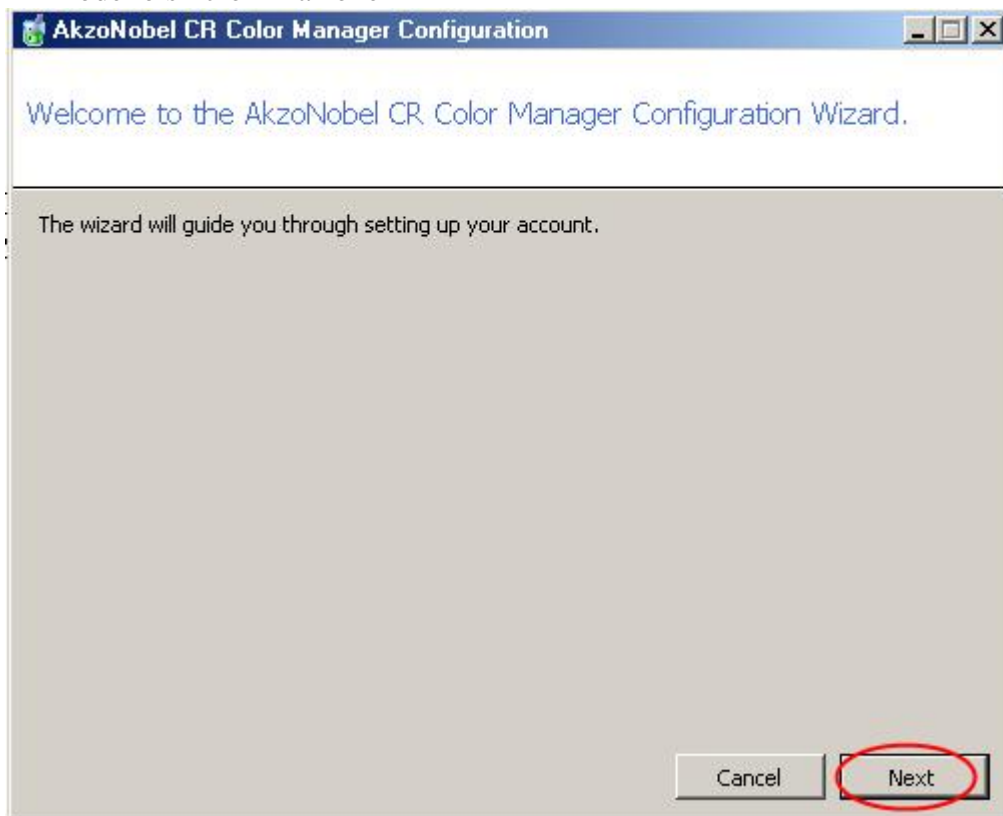
- Cliccare sul menu "Start" in Windows



Cliccare su "Programmi" quindi "Color Manager" e "Configurazione"



Procedere nel "Menu Configurazione" scegliendo "Successivo" e "Offline con modello sincronizzazione"



- Non effettuare modifiche alle impostazioni proxy e premere "Successivo"

AkzoNobel CR Color Manager Configuration

Configure proxy server settings.

No Proxy Server  
 Use Proxy Server

Back Next

- Inserire il proprio nome utente e password nella sezione "Inserire informazioni account" e premere "Successivo"

AkzoNobel CR Color Manager Configuration

Enter Account Information.

Account Number  Please reference the 'User Name AkzoNobel Car Refinishes' delivered to you per email. If you are uncertain about the email, please contact your AkzoNobel CR representative.

Account Password   
Retype Account Password

Account Brand Key  Please reference the 'Mixit Validation Key' delivered to you per email. If you are uncertain about the email, please contact your AkzoNobel CR representative.

Account Feature Key

Back Next